

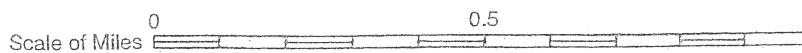
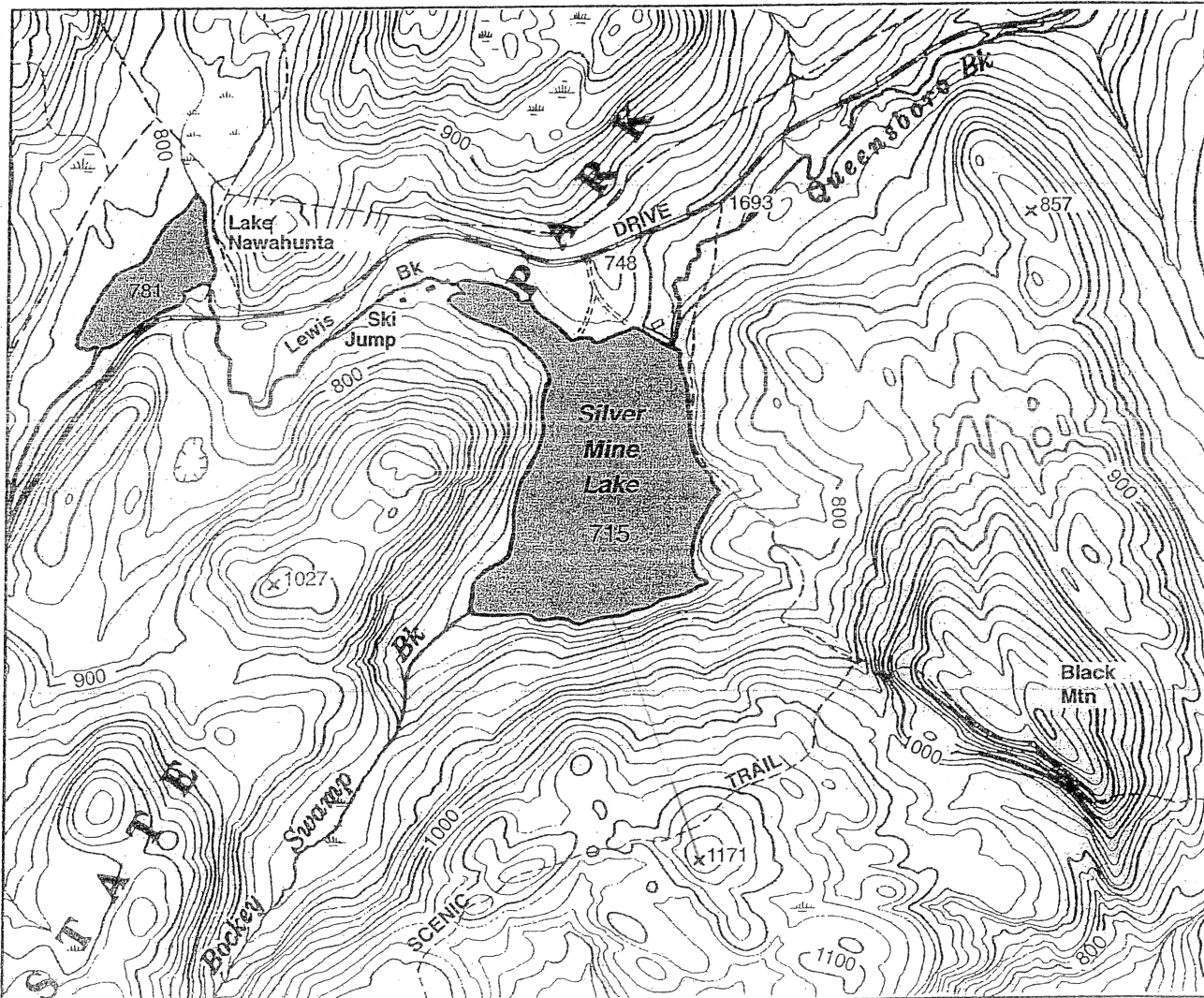
- 1.) Contour lines-
- 2.) Hatchured Contour Lines (hatch marks) -
- 3.) Contour Interval-
- 4.) Map Scale-
- 5.) Gradient-
- 6.) Topographic Profile –

Use the following map to answer the questions on the following page of the lab. You may draw on the map as you need to.

**Popolopen Lake Quadrangle,
New York State**



**Elevations in Ft. Above Mean Sea Level
(Harriman State Park, six miles west of Peekskill)**



- 1.) On this map, Elevation is measured in which unit? _____ Distance is measured in which unit? _____
- 2.) Find the area on the map towards the west where the "Ski Jump" is Located. Locate the 800 and 900 index **contour lines** just south of the Ski Jump. Highlight these index contours. Use these index contours to give the **contour interval** on this map = _____.
- 3.) The elevations of the lakes on these maps are marked on the lakes themselves. What is the **change in elevation** between Silver Mine Lake and Lake Nawahunta? Show work below and circle your final answer.
- 4.) Using the map scale at the bottom of the map and a piece of scrap paper, what is the length of Silver Mine Lake from the north to the south shore? _____
- 5.) Directly to the west of Silver Mine Lake, contour lines show a pattern of concentric circles. What type of landform does this indicate? _____. What is the highest elevation, marked with an "x" of this feature? _____.
- 6.) Just south west of Lewis Brook (abbreviated "Bk"), is a **hachured contour line**. What type of landform does this indicate? _____. What is the elevation of the hachured contour line? _____. What is the **deepest/lowest elevation** this feature can be? _____
- 7.) Find Black Mountain in the **eastern** portion of the map. Circle the area on this mountain that has the **greatest gradient**. If you were hiking along the trail (dotted line on map) in this area, describe the topography of your hike in the space below.
- 8.) The last contour line drawn on the top of Black Mountain is an index contour in bold, what is this elevation? _____ What is the **maximum elevation** that the peak of Black Mountain could be? _____
- 9.) **Bockey Swamp Brook** is located in the southwest portion of the map. What shape do the contour lines make when they cross Bockey Swamp brook? _____. What landscape feature does this indicate? _____ In which compass direction does Bockey Swamp flow? _____.
- 10.) Calculate the **gradient** from the top of the mountain in the south end of the map down to the Shore of Silver Mine Lake. Show all work below and make sure to include units in your final answer.
Gradient = change in elevation
Distance
- 11.) Your friend broke her leg hiking south east of Silver Mine Lake where the scenic trail path intersects with the Black Mt. path at the 900 ft. contour line. Briefly describe how you would reach her you had to come save her from the main road just north of Queensboro Brook. (Direction to walk, what you would pass, and how far exactly along the trail.)